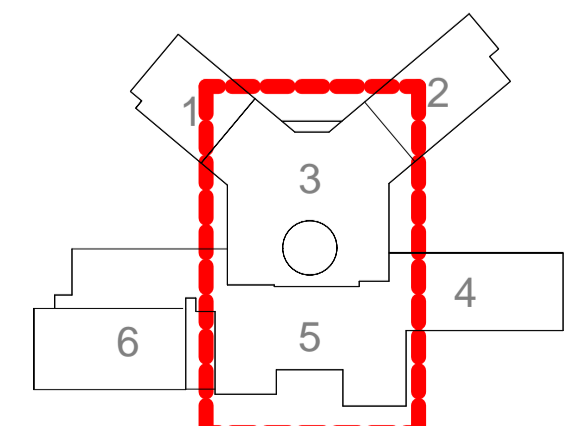


ORIGINAL SHEET SIZE 841 x 594mm

0 10 20 30 40 50 60 70 80 90 100mm

- Status Code (as defined in BS1192)**
- D3 - Issued for contractor design
  - D4 - Issued for manufacture/procurement
- Work In Progress (WIP)**
- S0 - Initial Status or WIP
- Shared**
- S1 - Issued for co-ordination
  - S2 - Issued for information
  - S3 - Issued for internal review
  - S4 - Issued for construction approval
- Documentation (Pre-construction)**
- D1 - Issued for costing
  - D2 - Issued for tender
- Documentation (Contractual)**
- A - Issued for construction
  - B - Issued for construction but with comments
  - C - Comprehensive revision required
- Archive**
- AB - Record Drawing

no	by	chkd	date	description
A	AJR	JR	28/05/2015	PLANNING ISSUE



**bam**  
 BAM Design Ltd  
 An operating company of  
 BAM Construct UK Ltd  
 Architecture  
 Interior Design  
 3D Visualisation  
 Feasibility Studies  
 Structural Engineering  
 Environmental Services  
 Building Information Modelling

Centrium Business Park  
 Cliffe Way, St Albans  
 Hertfordshire, AL1 2RD  
 01727 894300  
 design@bam.co.uk  
 www.bam.co.uk

project Nishkam West London

000 General Arrangement - First Floor - Block 3 & 5

scale 1 : 100 @ A1

date 05/27/15

project code originator zone level type rdb number rev  
 01727 894300 design@bam.co.uk  
**NHWL- BMD- MB-01- DR-A- 11017 A**

drawn AR BMM job no. dfg status  
 checked JR 4467 **PLANNING**  
 dfg/doc.ref