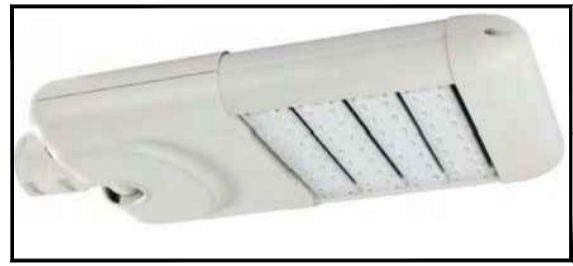
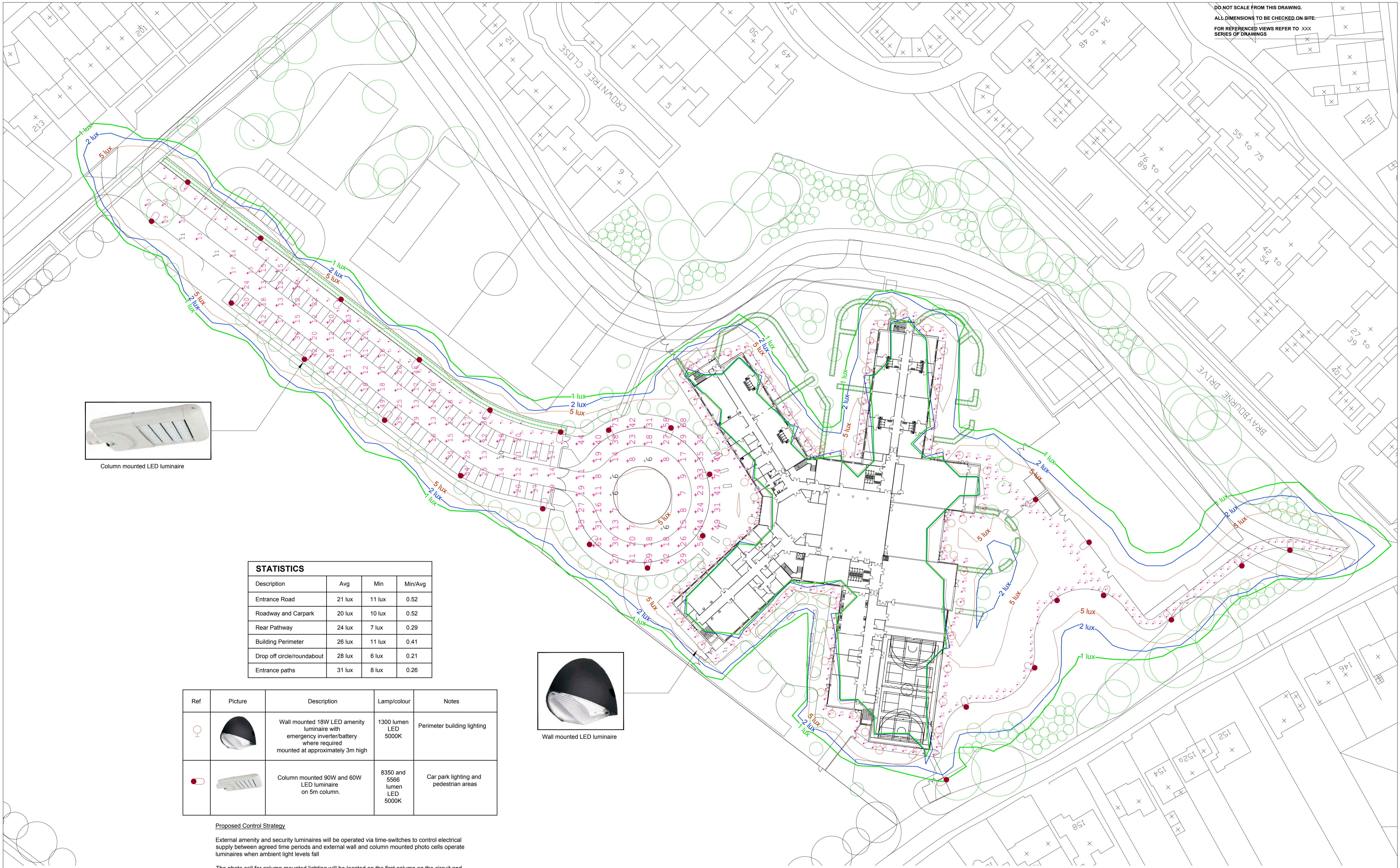


DO NOT SCALE FROM THIS DRAWING.  
ALL DIMENSIONS TO BE CHECKED ON SITE.  
FOR REFERENCED VIEWS REFER TO XXX SERIES OF DRAWINGS



Column mounted LED luminaire

| STATISTICS                 |        |        |         |
|----------------------------|--------|--------|---------|
| Description                | Avg    | Min    | Min/Avg |
| Entrance Road              | 21 lux | 11 lux | 0.52    |
| Roadway and Carpark        | 20 lux | 10 lux | 0.52    |
| Rear Pathway               | 24 lux | 7 lux  | 0.29    |
| Building Perimeter         | 26 lux | 11 lux | 0.41    |
| Drop off circle/roundabout | 28 lux | 6 lux  | 0.21    |
| Entrance paths             | 31 lux | 8 lux  | 0.26    |

| Ref | Picture | Description  | Lamp/colour                   | Notes                                  |
|-----|---------|--|-------------------------------|--|
| HO  |         | Wall mounted 18W LED amenity luminaire with emergency inverter/battery where required mounted at approximately 3m high | 1300 lumen LED 5000K          | Perimeter building lighting            |
|     |         | Column mounted 90W and 60W LED luminaire on 5m column.   | 8350 and 5566 lumen LED 5000K | Car park lighting and pedestrian areas |



Wall mounted LED luminaire

**Proposed Control Strategy**

External amenity and security luminaires will be operated via time-switches to control electrical supply between agreed time periods and external wall and column mounted photo cells operate luminaires when ambient light levels fall

The photo cell for column mounted lighting will be located on the first column on the circuit and will control other columns on that circuit

Wall mounted lighting will be controlled via a photo cell located on the north elevation of the building in a position to be agreed with the architect

An override switch will be provided via a time based timer to allow external lighting to be switched on for a set period to allow occupants of the building to vacate the site out of hours. It is envisaged that the timer will be set for twenty minutes but will be adjustable. The override switch will be located in the general office

Time switches will be programmed to isolate the electrical supply to luminaires between 23.00 and 07.00

- Status Code (as defined in BS1192)**
- D3 - Issued for contractor design
  - D4 - Issued for manufacture/procurement
- Work In Progress (WIP)**
- S0 - Initial Status or WIP
- Shared**
- S1 - Issued for co-ordination
  - S2 - Issued for information
  - S3 - Issued for internal review
  - S4 - Issued for construction approval
- Documentation (Pre-construction)**
- D1 - Issued for costing
  - D2 - Issued for tender
- Documentation (Contractual)**
- A - Issued for construction
  - B - Issued for construction but with comments
  - C - Comprehensive revision required
- Archive**
- AB - Record Drawing

**bam**  
BAM Design  
An operating company of  
BAM Construct UK Ltd  
Architecture  
Interior Design  
3D Visualisation  
Feasibility Studies  
Structural Engineering  
Environmental Services  
Building Information Modelling

Centium Business Park  
Griffiths Way, St Albans  
Hertfordshire, AL1 2RD  
01727 894200  
design@bam.co.uk  
www.bam.co.uk

**nishkamschool**  
westlondon

project Nishkam West London

title External Lighting - Proposal for Planning

scale 1:500 @ A1  
date May 2015

drawn KJH  
checked JKH

BAM job no. 4467  
S2

design@bam.co.uk  
www.bam.co.uk

851  
152  
154  
152a  
145