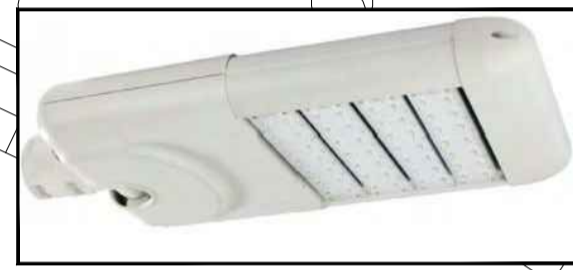
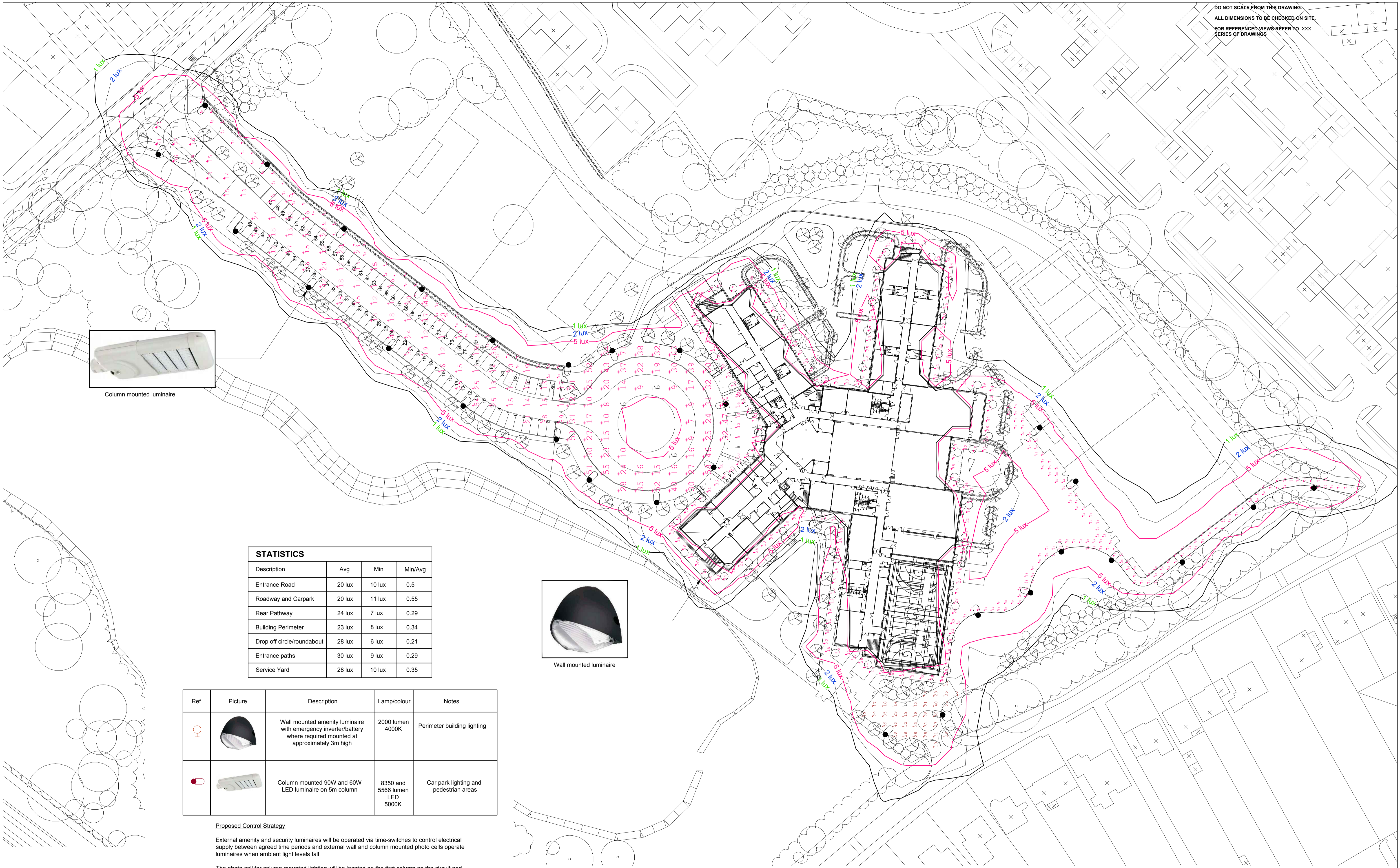


DO NOT SCALE FROM THIS DRAWING.
ALL DIMENSIONS TO BE CHECKED ON SITE.
FOR REFERENCED VIEWS REFER TO XXX
SERIES OF DRAWINGS



Column mounted luminaire



Wall mounted luminaire

STATISTICS			
Description	Avg	Min	Min/Avg
Entrance Road	20 lux	10 lux	0.5
Roadway and Carpark	20 lux	11 lux	0.55
Rear Pathway	24 lux	7 lux	0.29
Building Perimeter	23 lux	8 lux	0.34
Drop off circle/roundabout	28 lux	6 lux	0.21
Entrance paths	30 lux	9 lux	0.29
Service Yard	28 lux	10 lux	0.35

Ref	Picture	Description	Lamp/colour	Notes
HO		Wall mounted amenity luminaire with emergency inverter/battery where required mounted at approximately 3m high	2000 lumen 4000K	Perimeter building lighting
		Column mounted 90W and 60W LED luminaire on 5m column	8350 and 5566 lumen LED 5000K	Car park lighting and pedestrian areas

Proposed Control Strategy

External amenity and security luminaires will be operated via time-switches to control electrical supply between agreed time periods and external wall and column mounted photo cells operate luminaires when ambient light levels fall

The photo cell for column mounted lighting will be located on the first column on the circuit and will control other columns on that circuit

Wall mounted lighting will be controlled via a photo cell located on the north elevation of the building in a position to be agreed with the architect

An override switch will be provided via a time based timer to allow external lighting to be switched on for a set period to allow occupants of the building to vacate the site out of hours. It is envisaged that the timer will be set for twenty minutes but will be adjustable. The override switch will be located in the general office

Time switches will be programmed to isolate the electrical supply to luminaires between 23.00 and 07.00

- Status Code (as defined in BS1192)**
- D3 - Issued for contractor design
 - D4 - Issued for manufacture/procurement
- Work In Progress (WIP)**
- S0 - Initial Status or WIP
- Shared**
- S1 - Issued for co-ordination
 - S2 - Issued for information
 - S3 - Issued for internal review
 - S4 - Issued for construction approval
- Documentation (Pre-construction)**
- D1 - Issued for costing
 - D2 - Issued for tender
- Documentation (Contractual)**
- A - Issued for construction
 - B - Issued for construction but with comments
 - C - Comprehensive revision required
- Archive**
- AB - Record Drawing

P1.2	KJH	07.08.15	UPDATED TO LATEST SITEPLAN AND RE-ISSUED FOR PLANNING
P1.1	KJH	26.07.15	UPDATED TO LATEST SITEPLAN AND RE-ISSUED FOR PLANNING
P1	KJH	04.06.15	ISSUED FOR PLANNING



bam
BAM Design
An operating company of BAM Construct UK Ltd
Architecture
Interior Design
3D Visualisation
Feasibility Studies
Structural Engineering
Environmental Services
Building Information Modelling

Centium Business Park
Griffiths Way, St Albans
Hertfordshire, AL1 2RD
01727 846200
design@bam.co.uk
www.bam.co.uk

project Nishkam West London

title External Lighting - Proposal for Planning

scale 1:500 @ A1
date May 2015

drawn KJH
checked [signature]
BAM job no. 4467

org. status S0

org / doc ref: NWL-BMD-00-GF-DR-E-49020-P1.2